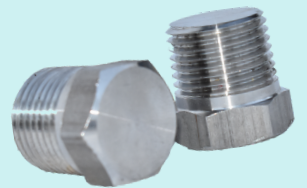
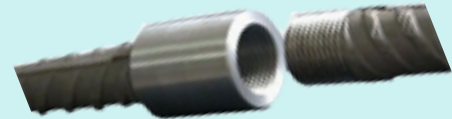
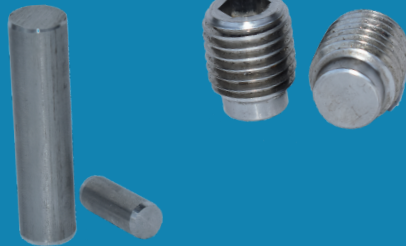
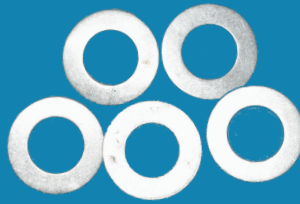
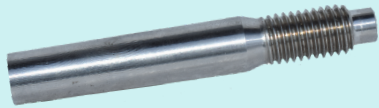
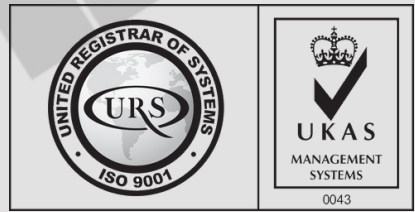




Technocrat
ENGINEERS



**Manufacturers of Studs, Standard & Non-standard Fasteners,
Precision Engineering Components, Rebar Splicing & SBT -
Couplers (Specialized Bar Technology)**

DEAR CUSTOMER,

Technocrat Engineers was established in 2006 with primary objective of manufacturing quality fasteners. We "Technocrat Engineers" are engaged in manufacturing and supplying of extensive range of Studs, Hex head fasteners, Socket Head Cap screws, Hex nuts, Set screws, Tie bolts, Couplers and special fasteners such as Dowel pins, NPT plugs, Taper pins etc. in various grades like 8.8,10.9,12.9, SS304, SS316, DUPLEX, SUPER- DUPLEX, ASTM A193 B7, B8, B8M, INCONEL, SS904L according to standards such as IS/ISO/ASTM/DIN/JIS/DIN/SAE etc.

It is the yield of tireless effort of its founders and a group of dedicated professionals with a lot of technical knowledge and experience in the fasteners industry. We manufacture quality fasteners as per our customer's drawing and their requirement and under third party inspection of their choice. "Technocrat Engineers" having it's well equipped facilities such as Forging, CNC machining, grinding, threading, heat treatment facilities, testing facilities in Bhiwandi near Mumbai, is successfully catering the fasteners requirement of various industries, like pump manufacturing industry, water treatment industry, automobile industry and general engineering industry. Our manufacturing range is from M16 to M64 for Hex screws/bolts and for studs our manufacturing range is from M8 to M64. We also manufacture SBT- Couplers which is used for reinforcement bars to provide full tensile strength, in construction of bridges,dams,columns, beams, foundations etc. We can supply as per your requirement and also fully equipped for contract manufacturing.

We are earnestly desirous of developing a cordial and long lasting business relation for mutual benefits and to meet the challenge of highly competitive global market.

GLIMPSE OF OUR MANUFACTURING UNIT



Roll-Threading



CNC Turning

OUR PORTFOLIO

HEX BOLTS/SCREW DIN 931/933, ISO4014, ISO4017



Material

Alloy Steel, Carbon Steel, SS304, SS316, Duplex, Super Duplex, Inconel, etc

Grades 8.8, 10.9, ASTM A193, B7, B8, B8M, etc

Dia M16-M64 | 5/8"-2 & 1/2"

Length 50mm to 300mm | 2" to 12"

Finish White/Yellow Zinc, Cr/Nickel, Black Oxide, Hot dip Galvanized

DOUBLE ENDED/FULL THREADED STUDS



Material

Alloy Steel, B7, B16, SS304, SS316, Duplex, Super Duplex, Inconel, etc

Grades 8.8, 10.9, ASTM A193, B7, B8, B8M, B16, etc

Dia M12-M64 | 1/2"- 2 & 1/2"

Length 75mm to 1000 mm | 3" to 40"

Finish White/Yellow Zinc, Cr/Nickel, Black Oxide, Hot dip Galvanized

U-BOLT, J-BOLT, L-BOLT & FOUNDATION BOLTS



Material

Mild steel, Alloy Steel, SS304, SS316, Duplex, Super Duplex, Inconel, etc

Grades 4.6, 8.8, 10.9 etc.

Dia M12-M64 | 1/2"-2 & 1/2"

Length 100mm to 2000 mm | 4" to 80"

Finish White/Yellow Zinc, Cr/Nickel, Black Oxide, Hot dip Galvanized

HEX HEAD NUTS DIN 934, IS4032 ETC



Material

Alloy Steel, Carbon Steel, SS304, SS316, Duplex, Super Duplex, Inconel, etc

Grades Class 8/10, ASTM A194 2H, B8, 8M, etc

Dia M16-M64 | 5/8"-2 & 1/2"

Length NA | NA

Finish White/Yellow Zinc, Cr/Nickel, Black Oxide, Hot dip Galvanized

PLAIN WASHERS ISO 7089



Material

Alloy Steel, Carbon Steel, SS304, SS316, Duplex, Super Duplex, Inconel, etc

Grades 8.8, 10.9 etc.

Dia M12-M100 | 1/2" & 42"

Length NA | NA

Finish White/Yellow Zinc, Cr/Nickel, Black Oxide, Hot dip Galvanized

SBT COUPLERS



Material

EN8D or as specified

Grades IS1786:2008

Dia M20, M24, M30, M36, M45

Length As per specification

Finish BLACK (NATURAL)

NPT Plugs



Dowel Pins



Allen Caps



Socket Set Screws



SBT COUPLERS

This product is used in a parallel threading mechanical splicing system for reinforcing bars for diameter 16mm to 40mm and is designed to provide full tensile strength.

Some of the benefits are as under :

- Full Tension splice and provide 100% load transmission
- Solves Bar congestion & allow better flow of concrete
- Provides continuity of reinforcing bars
- Reduce steel wastage and no overlapping
- No reduction of the bar cross section area
- Possible to splice rebar of different diameters by using reducing couplers

APPLICATIONS

Piles, Foundations, Column, Beams, Core Walls, Slabs, Bridges, Dams and other construction areas





• We manufacture fasteners as per our customer drawings

WORKS

15/16/17, BLDG NO.A6, PADMINI INDUSTRIAL COMPLEX, KALHER PIPELINE ROAD, PURNA, BHIWANDI - 421302

CERTIFICATION

OFFICE

203/204,B-3,Phase-1, Dev-Darshan CHS, Abv. KMC Hospital, Dongripada, Ghodbunder road, Thane (West)- 400615

CONTACT

E-mail : info@technocratengineer.com
E-mail : technoindengrs@gmail.com
M: +91-932-266-7258 (MR. KANAIYA THAKKAR)
M: +91 922-317-3740 (MR. SUNIL CHAVAN)
M: +91 981-978-8508 (MR. NIRBHAY THAKKAR)

